

NEW model

RYOKUSEI

GPS position and Tracking

Satellite buoy MarineStar L model SV-6000L

Easy operation and Low cost

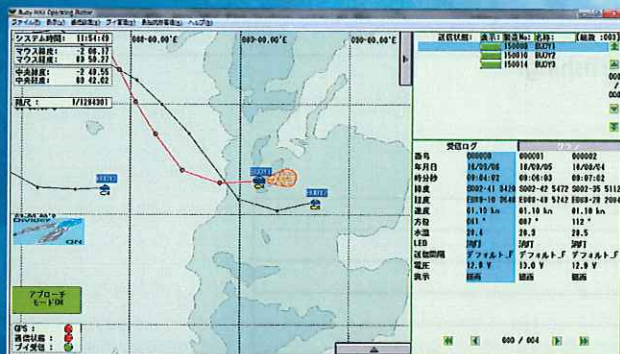


Image on Ship station in PC



PC



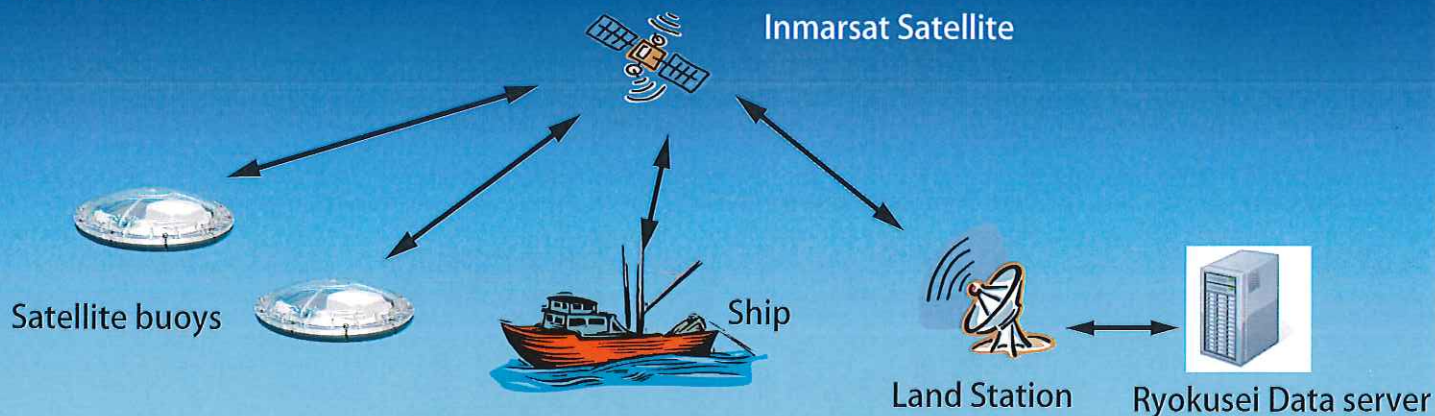
Antenna ship station



model SV-6000L Satellite buoy

Specifications and appearance may be changed without notice.

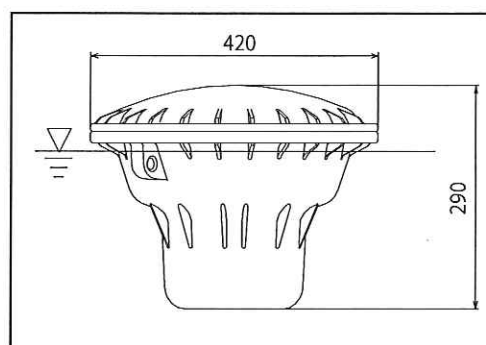
System Image



FEATURES

- GPS position, Direction, and Speed of buoy information help for fishing.
- GPS position can be seen on the Electronics map(BMOP)
- Easy to find buoy in night time by GPS position and LED light.
- Independent ship station antenna keeps stable communication.
- Satellite communication system can Un-limited distance.
- No whip antenna on buoy prepare easy handling on ship deck.
- Maintenance free power source by Solar charger system inside of buoy.
- Buoy data can shae ship side PC, and in office PC.
- Buoy data are saved automatically in PC which data help for future fishing.

Out side View Dimentions (mm)



SPECIFICATION

1. Satellite buoy

Model	SV-6000L
Dimention	Dia. 420mm × Height 290mm
Weight	8.6Kg
Power source	Rechargeble lead battery(12V 12Ah)
Charger system	Solar power
Water temperature IC	0-51°C 0.1°C step

2. Ship station(Laptop PC)

OS	Windows 10 Professional 64 bit
Display	S15.6 inch wide HD(1366 × 768)
Software for Map	BMOP(Buoy-MAX Operation Plotter) Ryokuseisha design
Communication	Inmarsat IDP/Fleet Broad band

3. Communication system

Transmission Interval	24hours(Default), 3 hours, One hour, 10 min. and polling command available
Communication(Ship)	INMASAT IDP、FLEET BROAD BAND
Communication(Buoy)	INMARSAT IDP

RYOKUSEISHA CORPORATION

Nihonbashi Kodenmacho 16-6, Chuo-ku, Tokyo 103-0001, Japan

Tel:(81) 3-5644-7950 Fax:(81) 3-5644-7953

www.ryokuseisha.com